



Understanding you

Mobile C-arm systems BV Pulsera

PHILIPS

Giving you the power...

Challenging interventional procedures require a powerful mobile fluoroscopy system. The BV Pulsera, the interventional powerhouse from Philips is designed for routine surgical interventions as well as specialized minimally invasive procedures that help people recover faster.

From Bolus Chasing to Abdominal Aortic Aneurysm repair, cardiac procedures to neurosurgical exams, the BV Pulsera has the imaging clarity and power to enable you to do your best work yet.

True to its name, the BV Pulsera pulses with power. Thanks to its highly efficient X-ray componentry and exceptional heat management capabilities, the BV Pulsera keeps pace with your longest cardiovascular and interventional procedures. That's not all. Its rotating anode technology and automatic high penetration mode give you the power to

see through virtually any patient. And enables you to see the finest details in the steepest projections and observe the fastest moving anatomy.

The BV Pulsera helps you clearly view dynamic images in surgery. The pulsed exposure mode produces superb image contrast, eliminates movement artifacts in cardiovascular examinations and provides you with motion blur-free images. In short, the BV Pulsera gives you the power and the image quality you demand.

The system is equipped with a 9" or 12" image intensifier and handles a full range of applications:

- Cardiovascular procedures
- Orthopedic surgery
- Abdominal surgery
- Neurosurgical procedures
- Thoracic surgery



to experience the difference

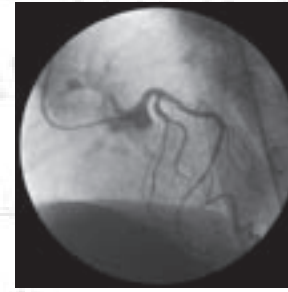
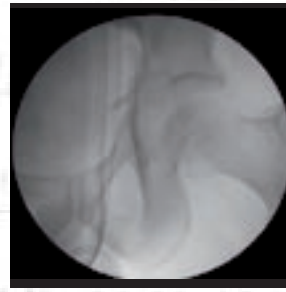
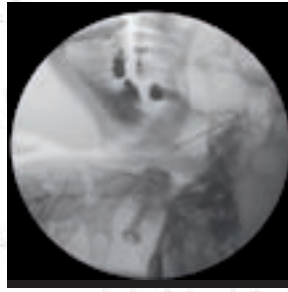
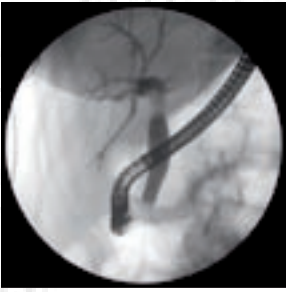
SmartVision - high quality images at a low dose

Philips knows how important it is for you to have high quality images. That's why we have developed the next generation in C-arm imaging: SmartVision. A unique concept, SmartVision offers you a combination of advanced technologies across the imaging chain that result in the high quality images at a low dose. Some highlights include:

- **1K² imaging:** The full digital imaging chain includes powerful image processing functions like advanced noise reduction and 2D edge enhancement, providing you with high quality images time after time.
- **BodySmart:** Unique BodySmart software gives you superb image contrast, time after time. It finds, tracks and precisely defines the field of view to anatomy – no matter where it is on the image intensifier.
- **Automatic Shutter Positioning:** With the unique Automatic Shutter Positioning feature, you can have optimal shutter positioning for the best image quality possible. With just one push of a button, the shutters are automatically positioned with respect to the anatomy of interest.
- **Automatic contrast/brightness:** Automatic contrast/brightness lets you optimize real-time contrast and brightness at the touch of a button.

SmartVision ensures that you get the best image, the first time, at a low dose.





DoseWise: With every new system, Philips looks at how we can incorporate better shielding and improve X-ray exposure to further reduce dose. The Philips unique beam filters for example is a feature that reduces dose by 40% over conventional filters. And with the pulsed fluoro modes, dose can be reduced by up to 75%.



Providing you a compact system...

Revolutionize the way you work with BV Pulsera. Optimally designed, the MobileView Station not only looks better, it performs better. Thanks to its compact size, this system can be easily moved around even in the tight confines of the OR. And its small footprint ensures that it can be brought as close to the operating table as is desired. Its unique design also enables easy cleaning of the equipment.

With the BV Pulsera and the intelligent viewing concept, the operator can enter patient demographics manually or retrieve a worklist via the hospital network. All this while the MobileView Station is already positioned at the surgical table. At the start of the procedure, the operator simply needs to turn the monitor towards the physician. Later, the monitors can be turned back to the operator to process the images and send them to PACS. To ensure high quality on-screen images, the MobileView Station is equipped with 18" LCD monitors. And to provide maximum flexibility, the height of the monitors can be adjusted to the surgeon's convenience – whether he/she is sitting or standing.



Height movement of the foldable monitors for optimal working and transport height.

for extra space





The BV Pulsera is designed to give you more space in the OR by taking up less of it.

The compact MobileView Station is easy to transport, maneuver and makes more room for the surgeon and operator. In short, the BV Pulsera is not only designed to give you more space, it's designed to give you more freedom.

REPEATING PATTERNS OF TEXT



Increasing your workflow...



and efficiency



Increase your efficiency in many ways with the BV Pulsera. The BV Pulsera can be quickly moved into place, thanks to its ultra compact foot and C-arc handles. With the single user concept and Anatomically Programmed Fluoroscopy (APF) parameters, you can easily control every step of your procedures.

The BV Pulsera has a fully integrated DICOM connectivity solution (full RIS/HIS compatibility, export of examination onto the hospital network) and is equipped with a state-of-the-art ViewForum Surgical Workstation. With this workstation you can import multi-modality images directly into your workstation and view them instantly on the right hand monitor that acts as a digital interactive light-box.

An intuitive user-interface with buttons exactly where you need and expect them to be, makes working with the BV Pulsera easier and faster.

With a touch screen on the left monitor, patient administration and post-processing on acquired images is literally at your fingertips.

All extras like the paper/ transparency printer and Medical DVD recorder can of course be easily accommodated into your MobileView Station.



Feel safe with Philips

Philips has over 50 years of experience in developing and servicing mobile C-arm systems. This proven history and experience is our solid basis to continue providing you with unparalleled customer service for the new BV Pulsera.

When you invest in the BV Pulsera, you invest in the future. Philips' ongoing commitments to develop future-safe technology means that you can keep your BV Pulsera system up-to-date throughout its lifecycle, embracing emerging application demands, and keeping up with advances in

networking and PACS.

Through service excellence, flexible solutions and effective relationships, Philips' CUSTOMer-CARE service programs give you all the support you need to ensure your BV Pulsera system always operates at peak performance – today and in the future.

**Philips Medical Systems is part
of Royal Philips Electronics**

Interested?

Would you like to know more about our
imaginative products? Please do not hesitate to
contact us. We would be glad to hear from you.

On the web

www.medical.philips.com

Via email

medical@philips.com

By fax

+31 40 27 64 887

By postal service

Philips Medical Systems
Global Information Center
P.O. Box 1168
5602 BD Eindhoven
The Netherlands

BV Pulsera and CUSTOMerCARE are
trademarks of Koninklijke Philips Electronics
N.V. Certain features described in this
brochure are optional or may not be available
in some countries. Please contact your local
Philips representative for further details.

Asia

Tel: +852 2821 5888

Europe, Middle East, Africa

Tel: +31 40 27 87246

Latin America

Tel: +55 954 628 1000

North America

Tel: +1-800-285-5585

©2005 Koninklijke Philips Electronics N.V.

All rights are reserved. Reproduction in whole or in part is
prohibited without the prior written consent of the
copyright holder.

Philips Medical Systems Nederland B.V. reserves the right
to make changes in specifications and/or to discontinue any
product at any time without notice or obligation and will
not be liable for any consequences resulting from the use
of this publication.

Printed in The Netherlands.

4522 962 08161/000 * OCT 2005

